

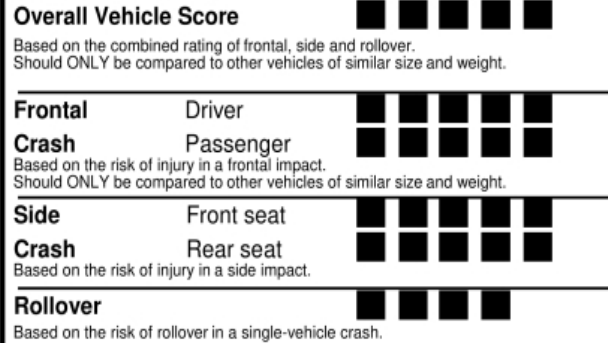
# 2016 TUCSON SE AWD - BLACK/GRAY

**SOLD TO:** NK460  
WIN HYUNDAI  
3462 NORTH PECK ROAD  
EL MONTE CA 91731

**SHIPPED TO:** EN718  
ENTERPRISE RENT A CAR  
5074 E. ANDERSON AVE. #104  
FRESNO CA 93727

**VIN:** KM8J3CA46GU075251  
**MODEL:** 84412A45  
**ENGINE:** G4NCFU082069  
**PORT OF ENTRY:** HU  
**EXTERIOR COLOR:** CARIBBEAN BLUE  
**INTERIOR/SEAT COLOR:** BLACK/BLACK  
**TRANSPORT:** TRUCK  
**ACCESSORY WEIGHT:** 0 lbs./ 0 kgs.  
**EMISSIONS:** This vehicle is certified to meet emission requirements in all 50 states

## GOVERNMENT 5-STAR SAFETY RATINGS



Star ratings range from 1 to 5 stars ( ) with 5 being the highest.  
Source: National Highway Traffic Safety Administration (NHTSA).  
[www.safercar.gov](http://www.safercar.gov) or 1-888-327-4236

**STANDARD FEATURES:**  
**AMERICA'S BEST WARRANTY**  
\*5-year/60,000-mile New Vehicle Warranty\*  
\*10-year/100,000-mile Powertrain Warranty\*  
\*7-year/Unlimited-mile Anti-perforation Warranty\*  
\*5-year/Unlimited-mile Roadside Assistance  
\*Limited warranties, see dealer for details

**ADVANCED SAFETY TECHNOLOGY**  
\*Electronic Stability Control (ESC) w/ Traction Control INCLUDED  
\*ABS w/ Electronic Brake-force Distribution & Brake Assist INCLUDED  
\*4-Wheel Disc Brakes INCLUDED  
\*Downhill Brake Control & Hillstart Assist Control INCLUDED  
\*Front, Front Side & Side-Curtain Airbags w/ Rollover Sensors INCLUDED  
\*Tire Pressure Monitoring System w/ Individual Tire Indicator INCLUDED

**POWERTRAIN TECHNOLOGY**  
\*2.0L Gasoline Direct Injection (GDI) 4-Cylinder Engine INCLUDED  
\*164 Horsepower @ 6,200 rpm/ 151 lb-ft torque @4000 rpm INCLUDED  
\*6-Speed Automatic Transmission with SHIFTRONIC® INCLUDED  
\*Active On-Demand AWD System w/ AWD Lock INCLUDED

**COMFORT & CONVENIENCE**  
\*17" Alloy Wheels & 225/60R17 Tires INCLUDED  
\*Driver's Blind Spot Mirror INCLUDED  
\*Front Solar Glass & Rear Privacy Glass INCLUDED  
\*Projector Headlights with LED Accents and Automatic On/Off INCLUDED  
\*Bodycolor Rear Spoiler w/ LED Brake Light INCLUDED  
\*Variable Intermittent Fr. Wipers w/ De-icer INCLUDED  
\*Remote Keyless Entry System w/ Alarm INCLUDED  
\*60/40 Split Folding Rear Seat w/ Recline & Center Armrest INCLUDED  
\*Power Door Locks, Windows and Heated Side Mirrors INCLUDED  
\*Air Conditioning w/ Cabin Air Filter INCLUDED  
\*12-Volt Power Outlets- (2) Front / (1) Cargo INCLUDED  
\*3.5-Inch LCD Multi-Information Display INCLUDED  
\*Tilt-and-Telescopic Steering Whl w/Audio, Cruise & Phone Ctrls INCLUDED  
\*Bluetooth® Hands-Free Phone System INCLUDED  
\*5-Inch Color Touchscreen Audio Display with Rearview Camera INCLUDED  
\*AM/FM/CD/MP3 Audio System w/ iPod®/USB and Aux Input Jacks INCLUDED  
\*SiriusXM® Radio w/ 90 Day Trial; Not Available in AK & HI INCLUDED  
\*Intermittent Rear Window Wiper/Washer INCLUDED  
\*Full Fuel Tank INCLUDED

**Manufacturer's Suggested Retail Price:** \$24,100.00

**ADDED FEATURES:**  
\*Popular Equipment Package: \$750.00  
Power Driver Seat w/ Power Lumbar Support  
LED Daytime Running Lights (DRL)  
Foglights (halogen)  
Roof Side Rails  
Premium Exterior Side Sills  
Driver's Auto-Down/Up Power Window  
Dual Illuminated Vanity Mirrors  
Glove-Compartment Light

Inland Freight & Handling : \$895.00  
**Total Price :** \$25,745.00

## MotorWeek's 2016 Driver's Choice Award For Best Small Utility

Actual results will vary for many reasons, including driving conditions and how you drive and maintain your vehicle. The average new vehicle gets 25 MPG and costs \$9,000 to fuel over 5 years. Cost estimates are based on 15,000 miles per year at \$ 3.00 per gallon. MPGe is miles per gasoline gallon equivalent. Vehicle emissions are a significant cause of climate change and smog.

**fueleconomy.gov**  
Calculate personalized estimates and compare vehicles

Manufacturer's suggested retail price includes manufacturer's recommended pre-delivery service. Gasoline license and title fees state and local taxes and dealer installed options and accessories are not included in the manufacturer's suggested retail price. This label has been affixed to this vehicle by Hyundai Motor America, pursuant to the requirements of 15 U.S.C. 1231 et seq. which prohibits its removal or alteration prior to delivery to the ultimate purchaser.

**PARTS CONTENT INFORMATION FOR VEHICLE IN THIS CARLINE:**  
**U.S./CANADIAN PARTS CONTENT:**  
**MAJOR SOURCES OF FOREIGN PARTS CONTENT: KOREA: 93 %**

Note: Parts content does not include final assembly, distribution, or other non-parts costs.

**FOR THIS VEHICLE:**  
**FINAL ASSEMBLY POINT: ULSAN, KOREA**  
**COUNTRY OF ORIGIN:**  
**ENGINE: KOREA**  
**TRANSMISSION: KOREA**

251 H 2606PMORNI

